

Aduro H4 Lux



Aduro Hybrid and Pellet Stoves

2024-2025



Aduro Hybrid

Wood and pellets finally combined

Aduro Hybrid combines the best of two worlds with easy and efficient heating from wood pellets and the cosiness of a real fire with wood. You can use Aduro Hybrid as a classic wood burning stove with the cosy flames, silent operation and charm that only real wood can provide. You can always get warm, even when the power is out. The hybrid stove's pellet function offers a new set of options:

- ✓ Ignite it remotely and come home to a warm house
- ✓ Operate manually or with your smartphone
- ✓ Can start on its own and maintain room temperature
- ✓ Weekly program and temperature control
- ✓ Quiet when using pellets and silent with firewood
- ✓ You can always switch between pellets and firewood
- ✓ Cosy ambience from a beautiful flame
- ✓ Patented solution



Winner of the European Business Award for the Environment

In 2018, the hybrid stove received the prestigious European Business Award for the Environment in the category "Sustainable products and services". The award recognises environmentally conscious companies for their innovative and sustainable initiatives. Aduro Hybrid lowers emissions considerably, even compared to the best wood burning stoves, thanks to its automatically-controlled pellet combustion.

All Aduro hybrid stoves comply with the strict requirements of the European environmental directive, **Ecodesign**, for both wood and pellet stoves.

Light up with your smart phone

Now you can heat your home even when you are not there. You can easily operate the stove with your smart phone and monitor the combustion continuously. To get the most out of your hybrid stove, the stove must be connected to a stable Wi-Fi.



The wood burning stove of the future

Aduro Hybrid is one of Europe's best-selling hybrid stoves. The most used hybrid stoves have burned more than 4,400 hours per year, equalling 183 days of operation day and night.

The stove, that turned the world's expectations for a wood burning stove upside down, has achieved several patents. Read more at adurofire.com.

 **25,000+**
HYBRID STOVES SOLD

**THOROUGHLY
TESTED
CONCEPT** 

75,000+  **TONS
OF PELLETS BURNED**



The spirit of "hygge"

Hygge is a Danish word that describes the feeling of being cosy, comfortable and happy. Enjoy the dancing flames and the warm atmosphere from real logs of an authentic Danish stove. You can let the stove burn overnight with pellets, so it is warm when you get up the next morning.



Aduro H1 with side glass and a 180° view of the fire.



Aduro H3 Lux with an elegant, black glass door and side glass.

Wood or pellets?

Aduro Hybrid can do both. Learn more about the stove's unique qualities.

Scan the QR code and watch the short film.





Aduro H4 Lux without side glass, and with an elegant, black glass door.

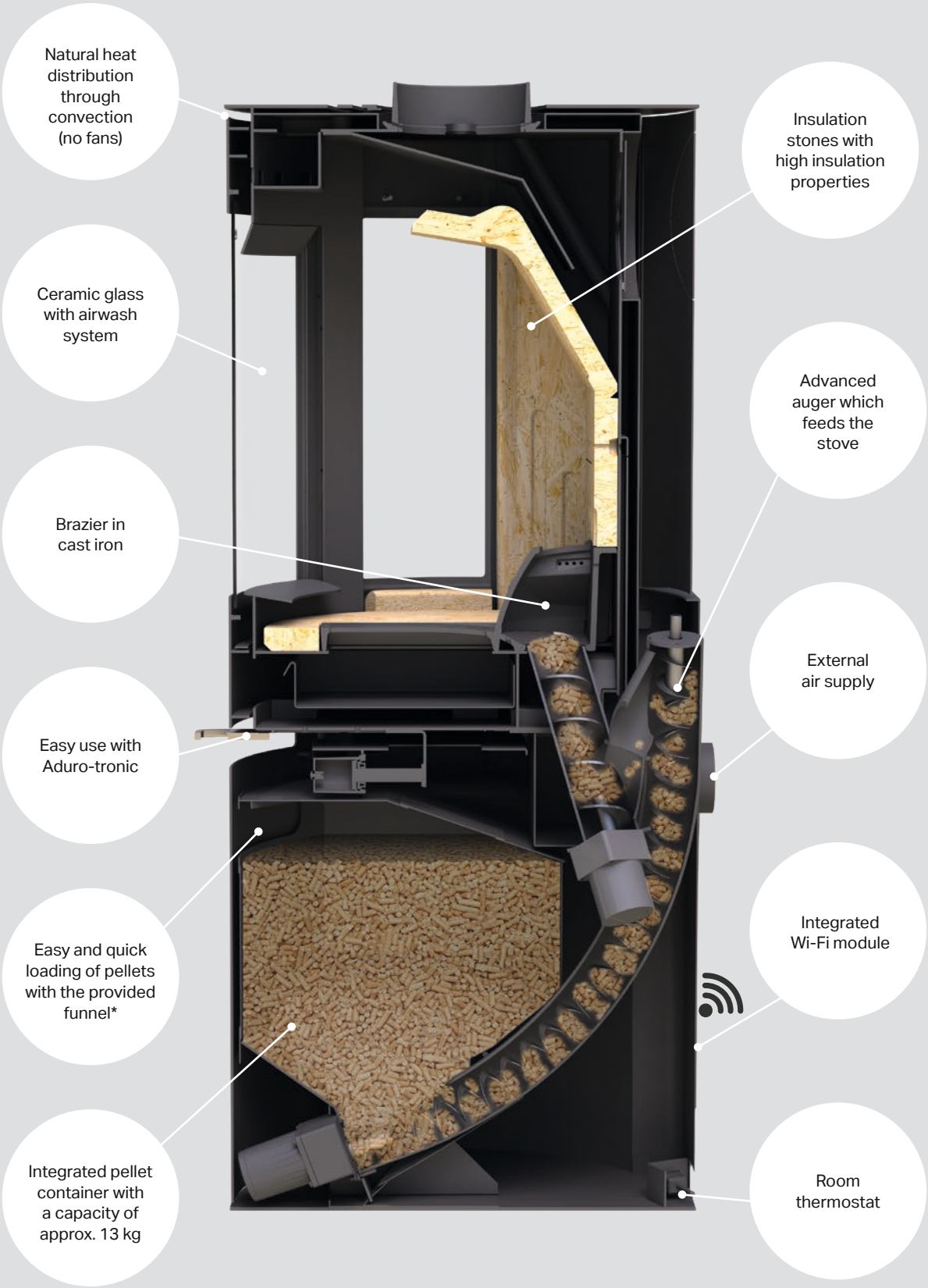


Aduro H2 without side glass. A possibility for shorter distance to combustible materials.



Aduro H5. Simple and cubic stove with clean lines.

World innovation built for comfort



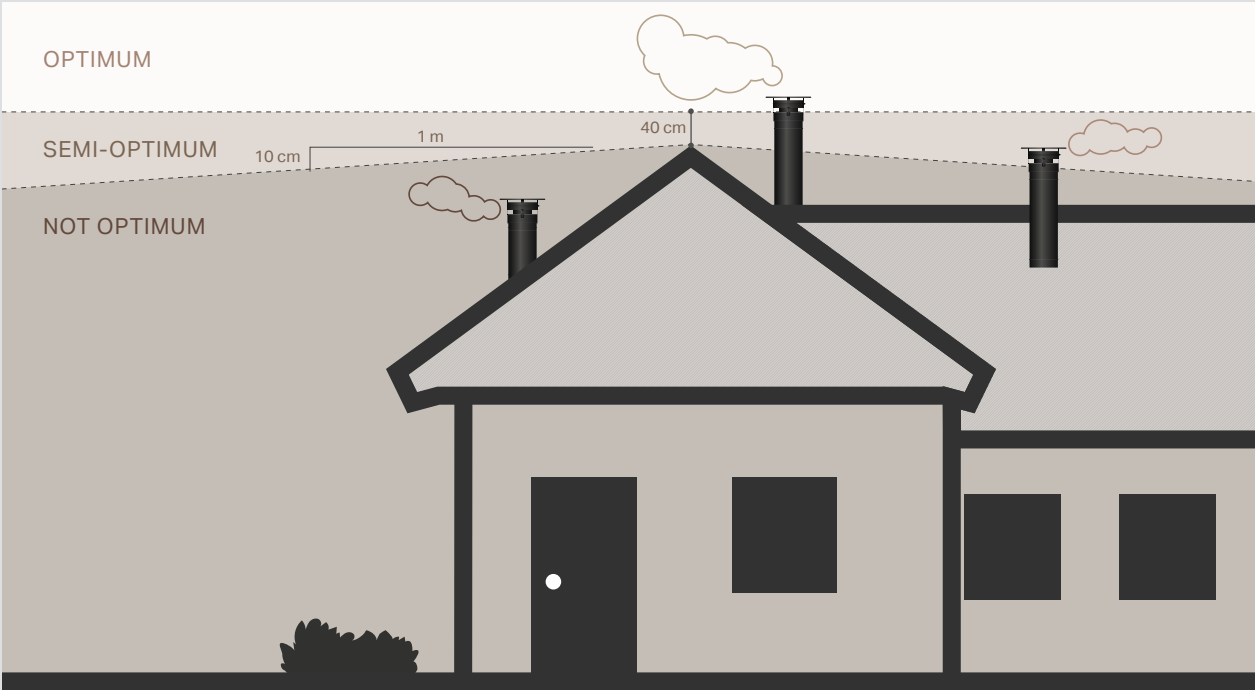
*The plastic funnel is made from recycled plastic from Danish households, and is just one of Aduro's sustainable initiatives.

Aduro Hybrid requires a stable chimney draft

Aduro Hybrid is a unique product that does not work like a regular pellet stove; instead, it requires a natural chimney draft. This is a requisite for the stove to work with firewood and without electricity. It is not a typical pellet stove that blows smoke into the chimney and can run for long periods of time on wood pellets. The operating time – before a light cleaning is required – depends on the level of heat, the quality of the wood pellets and the stability of the chimney draft. A stable chimney draft is critical for successful use of the hybrid stove. Check out our

guidelines for the placement of the chimney in the illustration below and read more at adurofire.com.

Cleaning takes about 1 minute, and we recommend that it is performed each time the pellet container needs to be filled (after burning about 13 kg of pellets). We recommend regular use of firewood, as this cleans the combustion chamber and optimises combustion.



Specifications

Aduro Hybrid Stoves



	H1	H2	H3 Lux	H4 Lux	H5
Article number	50601	50602	50603	50604	50605
Heats	20-140 m ² / 2-9 kW Wood stove 3-9 kW Pellet stove 2-7 kW	20-140 m ² / 2-9 kW Wood stove 3-9 kW Pellet stove 2-7 kW	20-140 m ² / 2-9 kW Wood stove 3-9 kW Pellet stove 2-7 kW	20-140 m ² / 2-9 kW Wood stove 3-9 kW Pellet stove 2-7 kW	20-140 m ² / 2-9 kW Wood stove 3-9 kW Pellet stove 2-7 kW
Dimensions (HxWxD)	120 x 50 x 50.8 cm	120 x 50 x 50.8 cm	120 x 50 x 50.8 cm	120 x 50 x 50.8 cm	116.7 x 50.3 x 50.6 cm
Weight	135 kg	135 kg	135 kg	135 kg	132 kg
Flue outlet, diameter	Ø15 cm top/rear	Ø15 cm top/rear	Ø15 cm top/rear	Ø15 cm top/rear	Ø15 cm top/rear
Distance to combustibile materials	7.5 cm behind stove / 70 cm to the side	7.5 cm behind stove / 40 cm to the side	7.5 cm behind stove / 70 cm to the side	7.5 cm behind stove / 40 cm to the side	7 cm behind stove (5 cm from air intake) / 37.5 cm to the side
Distance to furniture	100 cm	100 cm	100 cm	100 cm	100 cm
Distance to combustibile material in corner position	-	10 cm	-	10 cm	-
Distance from floor to centre of rear outlet	108.2 cm	108.2 cm	108.2 cm	108.2 cm	104.1 cm
Distance from centre of exhaust branch to rear edge of stove	25 cm	25 cm	25 cm	25 cm	25.3 cm
Pellet container capacity	Approx. 13 kg (6 mm ENplus A1 quality)				
Width of combustion chamber	40 cm	40 cm	40 cm	40 cm	38 cm
Aduro-tronic automatic	✓	✓	✓	✓	✓
Convection	✓	✓	✓	✓	✓
Ceramic electrical igniter	✓	✓	✓	✓	✓
External air supply. Suitable for airtight houses	✓	✓	✓	✓	✓
Efficiency	>81% wood stove / >87% pellet stove	>81% wood stove / >87% pellet stove	>81% wood stove / >87% pellet stove	>81% wood stove / >87% pellet stove	>83% wood stove / >87% pellet stove
Energy efficiency index	122.3	122.3	122.3	122.3	128.1
Energy efficiency class	A+	A+	A+	A+	A+
Power consumption in operation	18-33 Watt	18-33 Watt	18-33 Watt	18-33 Watt	18-33 Watt
Chimney draft	According to EN13240 og EN14785. Read more at adurofire.com				
Certifications	EN13240, EN14785, CE, NS3058 & Ecodesign				
Compatible with	iOS version 12 and newer and Android versions from 5.0 and newer				

Aduro Cloud

By registering Aduro Hybrid on Aduro Cloud, you will get direct access to your stove's data: what it does, how it burns, as well as the option to adjust the stove's settings. At the same time, Aduro Cloud monitors the stove so Aduro is able to prevent faults and stoppages.



adurocloud.com

Get the optimal chimney draft

If you want to improve the quality and duration of combustion while ensuring stable operation, Aduro offers Aduro DraftOptimizer; a smoke exhauster that can improve and stabilise a weak chimney draft.

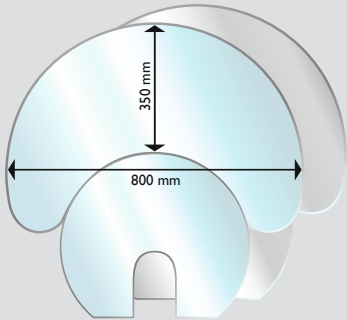
Read more and watch the film about the product at adurofire.com.



DEVELOPED
BY CHIMNEY
SWEEPERS

Accessories

We have designed a number of accessories for Aduro hybrid and pellet stoves. See our large accessories selection at adurofire.com.



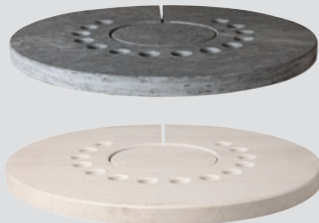
Half-moon glass floor hearth
For Aduro hybrid stoves
(except H5) and Aduro pellet
stoves. Available in grey
and clear glass.



Aduro Proline 3
companion set



Wireless room temperature
sensor



Top plate made of
soapstone

Top plate made of
limestone



Pliers for Aduro Hybrid
and the P5 series



Aduro Ash Cleaner

Aduro Pellet Stoves

Quick and easy heating of your home

Aduro pellet stoves combine Danish design with maximum thermal comfort and innovative technology. All you need to do is to fill up the stove with wood pellets, and after a few minutes you can see the flames and enjoy the warmth. On all models,

there is an option to adjust the convection fan as needed. Aduro pellet stoves can be programmed on a weekly basis and function as the primary heat source or as a nice supplement to other heat sources.



Aduro P5 Lux
Exclusive pellet stove with an elegant, black glass door, and side glass that gives a great view to the flames.



Advantages of Aduro Pellet Stoves

- ✓ Danish design
- ✓ Integrated Wi-Fi module. Operation by app regardless of time and place
- ✓ Prepared for external air supply
- ✓ Easy filling of pellets
- ✓ Simple cleaning and maintenance

Aduro P5 series

The stoves in the P5 series are the closest you will get to pellet stoves with a classic wood stove look. The curved panorama glass gives you a great view of the calm and natural-looking flames.

With an app on your phone or the enclosed remote control, you can easily turn on, turn off and regulate the heat in the stove. In addition, the smart app enables operation of the stove, no matter if you are at home or away.

What makes the Aduro P5 series unique?

- ✓ A calm and beautiful flame
- ✓ The pellet container is discreetly placed under the combustion chamber
- ✓ Convenient pouring height for filling pellets
- ✓ Operation by app or remote control
- ✓ Pellets are pushed up from below, reducing the sound of pellets falling into the burner



Aduro Proline plastic insert

Three-part insert in recycled plastic for Aduro Proline Ø45 baskets – practical for filling pellets into Aduro hybrid and pellet stoves.



Aduro P4

Aduro P4 looks similar to Aduro P1 but behind the beautiful appearance, a more advanced technology hides. The stove is equipped with an effective air-wash system that prevents soot on the glass, a nicer flame and a centred smoke outlet at the top of the stove. The integrated Wi-Fi module makes it easy to control the stove from your smart phone, regardless of time and place.





Aduro P1

Aduro P1 series

With the Aduro P1 series, designer Casper Storm has created a series of round pellet stoves in a Scandinavian design. A large, stylish glass door leads your eyes right into the flames. The integrated Wi-Fi module makes it easy and simple to control the stove, no matter where you are in the world. The stove can work on 5 levels of which level 1 is a silent level with no fan.



Aduro P1.4

The stove has white glass sides that give the stove a harmonious look in contrast to the black glass door.



Aduro P1.3
A large, elegant glass door and black glass sides give the stove an exclusive look.

Specifications Aduro Pellet Stoves



	P1	P1.3	P1.4	P4	P5	P5 Lux
Article number	50702	50703	50704	50741	50751	50752
Heats	30-140 m ² (3-8 kW)	30-140 m ² (3-8 kW)	30-140 m ² (3-8 kW)	30-140 m ² (3-8 kW)	30-140 m ² (2,5-6,8 kW)	30-140 m ² (2,5-6,8 kW)
Dimensions (HxWxD)	110.09 x 53.3 x 54.35 cm	110.09 x 53.3 x 54.35 cm	110.09 x 53.3 x 54.35 cm	113 x 56 x 56 cm	120 x 50 x 56 cm	120 x 50 x 56 cm
Weight	95 kg	95 kg	95 kg	117 kg	120 kg	120 kg
Flue outlet	Ø8 cm rear	Ø8 cm rear	Ø8 cm rear	Ø8 cm top	Ø8 cm top/rear	Ø8 cm top/rear
Distance to combustible materials	30 cm behind stove / 30 cm to the side	30 cm behind stove / 30 cm to the side	30 cm behind stove / 30 cm to the side	10 cm behind stove / 10 cm to the side	10 cm behind stove / 40 cm to the side	10 cm behind stove / 40 cm to the side
Distance to furniture	80 cm	80 cm	80 cm	80 cm	70 cm	70 cm
Distance from floor to centre of rear outlet	Approx. 18.5 cm	Approx. 18.5 cm	Approx. 18.5 cm	-	108.2 cm	108.2 cm
Pellet container capacity	15 kg	15 kg	15 kg	15 kg	Approx. 14 kg	Approx. 14 kg
Convection	✓	✓	✓	✓	✓	✓
External air supply. Suitable for airtight houses	✓	✓	✓	✓	✓	✓
Efficiency	>91% (2.8 kW) / >90% (8 kW)	>91% (2.8 kW) / >90% (8 kW)	>91% (2.8 kW) / >90% (8 kW)	>92% (2.4 kW) / >90% (8 kW)	>=87% (3.4 kW) / >87% (6.8 kW)	>=87% (3.4 kW) / >87% (6.8 kW)
Energy efficiency index	126.5	126.5	126.5	129.9	122.8	122.8
Energy efficiency class	A+	A+	A+	A+	A+	A+
Power consumption in operation	55-160 Watt	55-160 Watt	55-160 Watt	50-160 Watt	37-81 Watt	37-81 Watt
Chimney draft	According to EN14785. Read more at adurofire.com					
Certifications	EN14785, CE & Ecodesign					
Compatible with	iOS version 9 and newer and Android versions from 4.1 and newer					



Aduro A/S - Beringvej 17 - DK-8361 Hasselager
adurofire.com - aduroshop.com